

PART NUMBER	DESCRIPTION	Material
FP-RV41239B	HYDRA BED, OIL RESERVOIR	RECT. TUBING 4x12x3/16

REV.	DESCRIPTION	DATE	APPROVED
C	ADD WELD SEAM NOTE & REVISE 1-1/2" HOLE	11/15/2017	
D	REVISE 1-1/2" HOLE POSITION	11/20/2017	
E	REVISE HOLE DIAMETER	12/5/2017	
F	REVISE HOLE DIAMETER	3/27/2019	
G	RELOCATE WELD SEAM TO BOTTOM OF TUBING	9/28/2020	
H	ADDED ADDITIONAL WELD SEAM NOTE	8/27/2022	HP (JD)

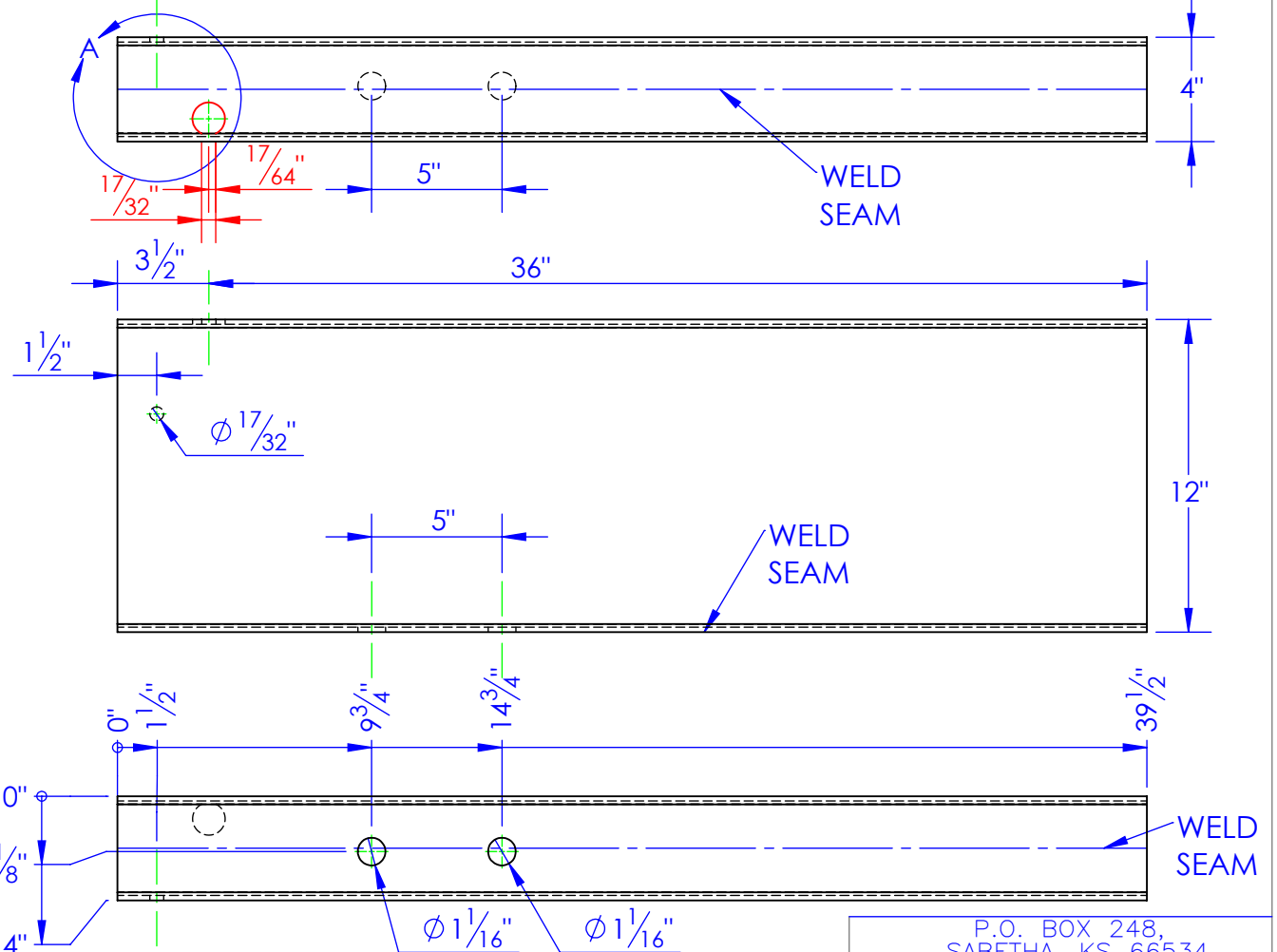
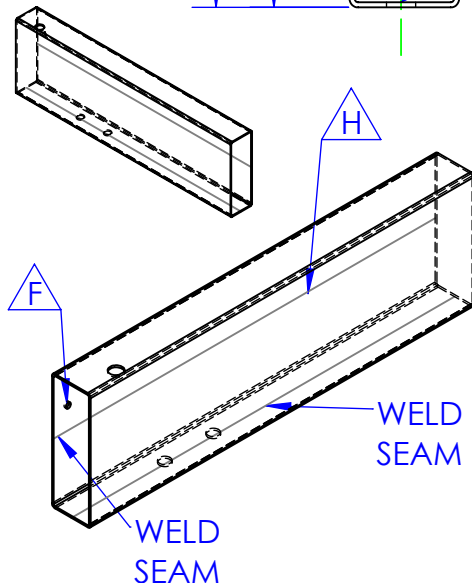
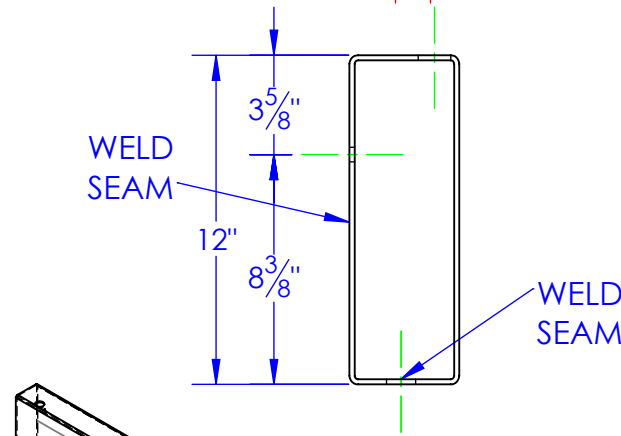
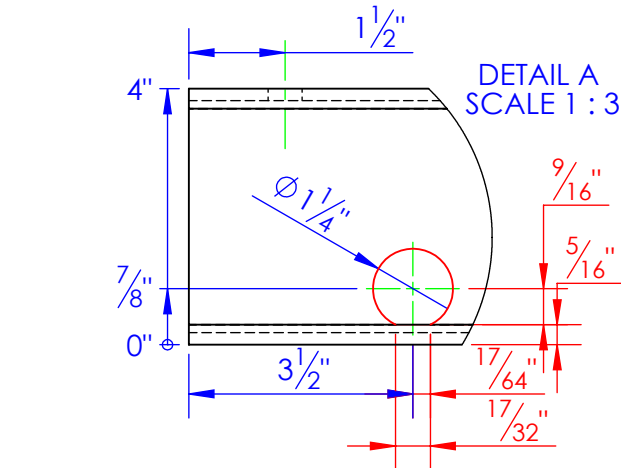
NOTE:

DRAWING LOCATION:

M:\Drawings\Heath Information\Triple CIST TC DWG\11 Hydra Bed-30 series\1X00 Fab dwg Hydra Bed\1300 Headache Rack HB

PART LOCATION:

M:\Drawings\Heath Information\Triple CIST TC DWG\SW MODELS\FP-R



NOTE:

LOCATE WELD SEAM ON SIDE WITH 1/2" HOLE.

DIMENSIONS ARE IN INCHES
TOLERANCES:
FRACTIONAL $\pm 1/16$
ANGULAR: MACH ± 1 BEND ± 1
TWO PLACE DECIMAL ± 0.010
THREE PLACE DECIMAL ± 0.005

MATERIAL RECT. TUBING
4x12x3/16
DO NOT SCALE DRAWING

NAME	DATE
DRAWN ETHAN	8/27/2022
PART # FP-RV41239B	
ASM #	
COMMENTS:	

HYDRA BED, OIL
RESERVOIR

P.O. BOX 248,
SABETHA, KS 66534



SIZE	DWG. NO.	REV.
A	11-1305 H	H
SCALE: 1:7	WEIGHT: 64.68	SHEET 1 OF 1